



Lesson Sequence



1. Know the differences between seeds and bulbs



2. Design an experiment to find out what plants need to grow



3. Describe what plants need to grow and stay healthy



4. Describe the life cycle of a plant



5. Observe and record the growth of plants over time



6. Understand that plants adapt to suit their environment

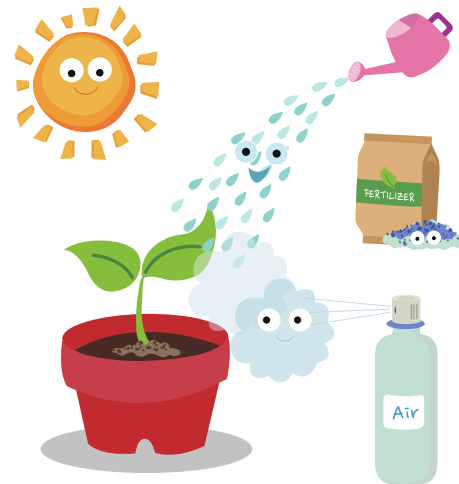
What Plants Need to Grow

Plants need **water** to survive. Plants get water through their roots.

Plants need the right **temperature** to grow.

Plants need **sunlight** to help them grow and make their own food.

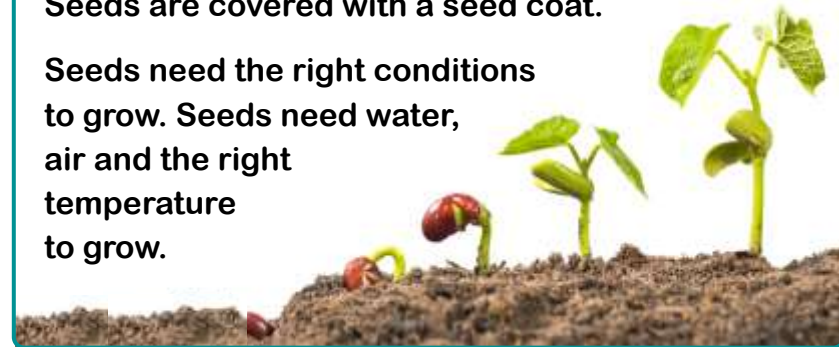
Plants need **room** to grow. Plants need time to grow. It can take days, months or even years for them to grow.



Life Cycle of a Plant

A plant **germinates** when it starts to grow. Inside a seed/bulb is the baby plant. Seeds are covered with a seed coat.

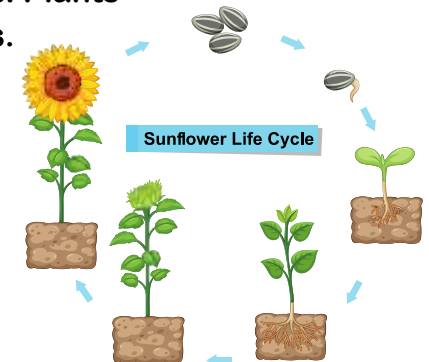
Seeds need the right conditions to grow. Seeds need water, air and the right temperature to grow.



Life Cycle of a Plant

Plants begin life as **seeds or bulbs**. They need soil, air and water to grow. Plants grow into young plants called **seedlings**. Plants grow **flowers and fruits**.

These produce seeds. When the plant is pollinated, the seeds find their soil. The process starts again!



Rocket Words

photosynthesis	the process in which green plants use sunlight to make their own food
carbon dioxide	plants use this to make their own food in a process called photosynthesis
oxygen	one of the main gases that make up air
glucose	a sugar that plays a vital role in the metabolism of most living organisms
pollination	the process that allows plants to reproduce
germination	the process by which a plant grows from a seed
crop	a plant or plant product that is grown and harvested
forests	places where there are mostly trees

What I already know:

Year 1

- ☐ I can identify and name a variety of common and wild and garden plants, including deciduous and evergreen trees
- ☐ I can identify and describe the basic structure of a variety of common flowering plants, including trees

What I will learn now:

Year 2

- ☐ I can observe and describe how seeds and bulbs turn into mature plants
- ☐ I can find out and describe how plants need water, light and a suitable temperature to grow and stay healthy

What I will learn next:

Year 3

- ☐ I can identify and describe the functions of different parts of flowering plants: roots, stem/trunk, leaves and flowers
- ☐ I can explore the requirements of plants for life and growth (air, light, water, nutrients from soil, and room to grow) and how they vary from plant to plant
- ☐ I can investigate the way in which water is transported within plants
- ☐ I can explore the part that flowers play in the life cycle of flowering plants, including pollination, seed formation and seed dispersal



Explain why each point below is important to help a plant grow.

Water

Temperature

Light

Space and time

Circle what plants need to grow.

garden watering can air
water room right temperature
time light



Explain what happens to plants to help them reproduce.

What do plants need to grow?

What happens to a plant when it dies?

