



Lesson Sequence



1. Understand that seeds grow into plants



2. Identify the basic parts of a plant and tree



3. Understand that different plants can grow in the same environment



4. Know the difference between deciduous and evergreen trees



5. Know that fruit and vegetables are varieties of plants



6. Record the growth of a plant



wildflower
flowers that are not planted by a person

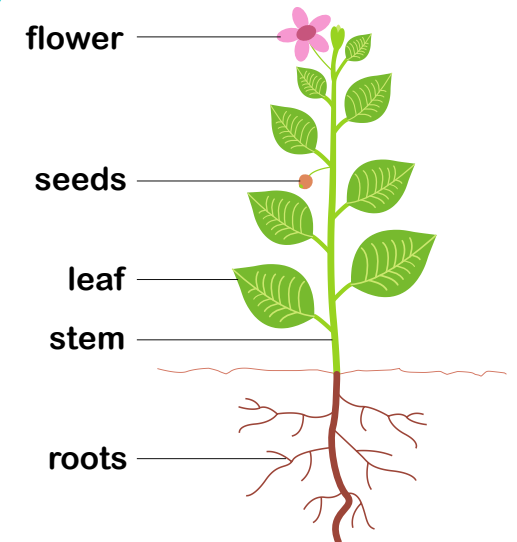
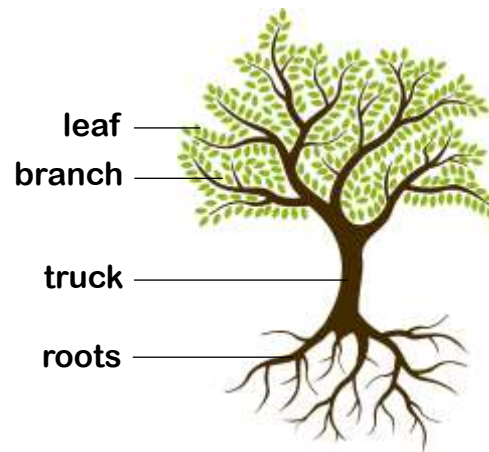
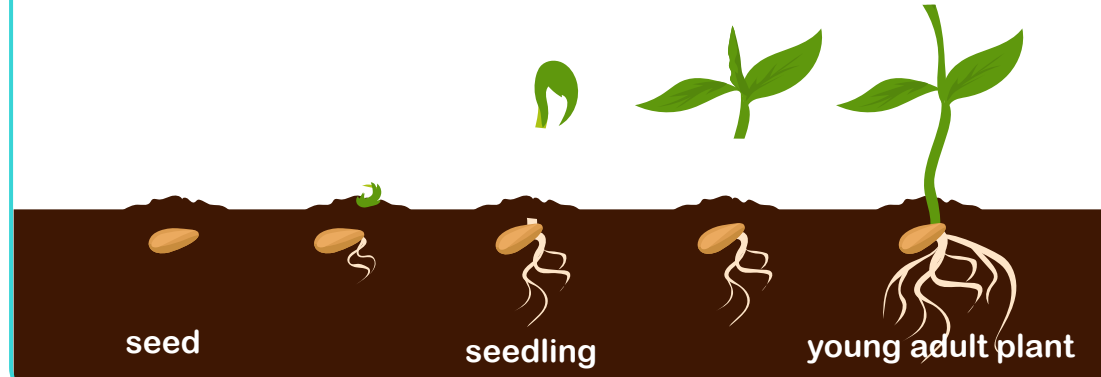


deciduous
trees that drop their leaves every year



evergreen
trees that keep their leaves all year round

Seeds grow into larger plants such as flowers, bushes and trees.



Rocket Words



seed

the small part of a plant which grows into a new plant



plant

a living thing that has roots, a stem or trunk and leaves



stem

part of a plant that supports a flower



petal

a leaf that forms part of a flower and is usually coloured



deciduous

trees that drop their leaves every year



evergreen

trees that keep their leaves all year round



fruit

part of a plant that has seeds



vegetable

part of a plant that can be eaten

What I already know:

Reception

- ☐ I know why a plant is a living thing and what it needs to live
- ☐ I know the difference between a living and a non-living thing
- ☐ I can explain the life cycle of a plant
- ☐ I can label the key features of a plant
- ☐ I know a plant grows from a seed

What I will learn now:

Year 1

- ☐ I can identify and name a variety of common and wild and garden plants, including deciduous and evergreen trees
- ☐ I can identify and describe the basic structure of a variety of common flowering plants, including trees

What I will learn next:

Year 2

- ☐ I can observe and describe how seeds and bulbs turn into mature plants
- ☐ I can find out and describe how plants need water, light and a suitable temperature to grow and stay healthy



Circle the wildflowers.



Circle the tree which loses its leaves during the winter.



Draw a line between the different stages of a plant's growth.

seed seedling young adult plant



Label the parts of the plant.

roots = ____

seeds = ____

stem = ____

leaf = ____

flower = ____

