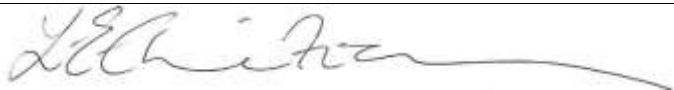


# ROTHERHITHE SCHOOL

## Safeguarding (Child Protection)

# POLICY

<b>DATE OF ISSUE</b>	September 2020	<b>DATE OF NEXT REVIEW</b>	September 2021
<b>PERSON RESPONSIBLE FOR UPDATING THIS POLICY</b>		LISA CHRISTIANSEN	
<b>ADOPTED AND SIGNED ON BEHALF OF THE SCHOOL BY THE GOVERNING BODY AT THE MEETING ON:</b>			
<b>SIGNATURE OF GOVERNOR OR APPROPRIATE REPRESENTATIVE</b>			
<b>SIGNATURE OF HEADTEACHER, OR APPROPRIATE REPRESENTATIVE</b>			

**Copies of this plan are held by:**

<b>NAME</b>	<b>DESIGNATION</b>
Maxine Walters	PA to Head Teacher
Lisa Christiansen	Head of School
Kofi Danquah	Safeguarding and Interventions Officer

# RPS Safeguarding Team



**Executive Head/ Galiema Amien-Cloete**



**Head of School/LAC Designated Teacher/ Lisa Christiansen**



**English Lead/ Nina Hall**



**Safeguarding & Intervention Officer/ Kofi Danquah**



**Assistant Head Teacher/ Susan Davies**

**Should you have any concerns about a child, please report to one of the Safeguarding team above. Ask any member of staff where to find us or ask at the main school office**

## **ROTHERHITHE PRIMARY SCHOOL, SAFEGUARDING (CHILD PROTECTION) POLICY**

Rotherhithe Primary School is committed to providing a safe and secure environment for children, staff and visitors and promoting a climate where children and adults will feel confident about sharing any concerns which they may have about their own safety or the well-being of others. We aim to safeguard and promote the welfare of children by protecting them from maltreatment; preventing impairment of children's health or development; ensuring that children grow up in circumstances consistent with the provision of safe and effective care; and taking action to enable all children to have the best outcomes.

*The School's Child Protection (CP) policy draws upon duties conferred by the Children Acts 1989 and 2004, The Children and Families Act 2014, S175 of the 2002 Education Act, The Education (Independent School Standards) Regulations 2014 (for independent schools), The Non-Maintained Special Schools (England) Regulations 2015 (for non-maintained special schools) and the guidance contained in "[Working Together to Safeguard Children](#)", the DfE's statutory guidance "[Keeping children safe in education](#)", Ofsted Guidance and procedures produced by the London Safeguarding Children Board ([LSCB](#)) and the Southwark Safeguarding Children Partnership ([SSCP](#)). We also have regard to the advice contained in DfE's "[What to do if you're worried a child is being abused](#)" and "[Information Sharing – Advice for practitioners](#)". The policy is applicable to all on and off-site activities undertaken by pupils whilst they are the responsibility of the School.*

We will ensure that all staff read at least Part one of DfE guidance "[Keeping children safe in education](#)" and that mechanisms are in place to assist staff to understand and discharge their role and responsibilities as set out in Part one.

### **POLICY AIMS**

The purpose of this policy is to:

- Identify the names of responsible persons in the school and explain the purpose of their role
- Outline the role of the governing body
- Describe what should be done if anyone in the school has a concern about the safety and welfare of a child who attends the school
- Identify the particular attention that should be paid to those children who fall into a category that might be deemed "vulnerable"
- Set out expectations in respect of training
- Ensure that those responsible for recruitment are aware of how to apply safeguarding principles in employing staff
- Set out expectations of how to ensure children are safeguarded when there is potential to come into contact with non-school staff, e.g. volunteers, contractors etc.
- Outline how complaints against staff will be handled
- Set out expectations regarding record keeping
- Clarify how children will be kept safe through the everyday life of the school
- Outline how the implementation of this policy will be monitored.

This policy is consistent with all other policies adopted by the Governors and should in particular be read in conjunction with the following policies relevant to the safety and welfare of children:

- anti bullying Policy
- Home Visits Policy
- Internet-safety policy
- Policy for Intimate Care and Managing continence and toileting
- SRE policy
- Educational Visits Policy
- Staff Code of Conduct
- Fire Emergency Plan
- Asbestos management policy
- Anti-Radicalisation Statement

## **COVID-19**

From 20<sup>th</sup> March 2020, parents were asked to keep their children at home, wherever possible, and for schools to remain open only for those children of workers critical to the COVID-19 response - who absolutely need to attend and we have adopted an addendum to our safeguarding policy based on the Local Authority's [Model COVID-19 Safeguarding Policy Addendum](#)

### **1. Context**

From 20<sup>th</sup> March 2020 parents were asked to keep their children at home, wherever possible, and for schools to remain open only for those children of workers critical to the COVID-19 response - who absolutely need to attend.

Schools and all childcare providers were asked to provide care for a limited number of children - children who are vulnerable, and children whose parents are critical to the COVID-19 response and cannot be safely cared for at home.

This addendum of the Rotherhithe Primary School Safeguarding (Child Protection) Policy contains details of our individual safeguarding arrangements in the following areas:

- 1. Context**
- 2. Vulnerable children**
- 3. Attendance monitoring**
- 4. Designated and Deputy Safeguarding Leads in our school**
- 5. Reporting a concern**
- 6. Safeguarding training and induction**
- 7. Safer recruitment/volunteers and movement of staff**
- 8. Online safety in schools**
- 9. Children and online safety away from school**
- 10. Supporting children not in school**
- 11. Supporting children in school**
- 12. Peer on Peer Abuse**
- 13. Support from the Local Authority**

## Key contacts in school

Role	Name	Contact number	Email
Designated Safeguarding Lead	Galiema Amien-Cloete	020 7237 2586	head@rotherhithe.southwark.sch.uk
Deputy Designated Safeguarding Leads	Kofi Danquah Sue Davies Nina Hall	020 7237 2586	<a href="mailto:kdanquah@rotherhithe.southwark.sch.uk">kdanquah@rotherhithe.southwark.sch.uk</a> <a href="mailto:sdavies@rotherhithe.southwark.sch.uk">sdavies@rotherhithe.southwark.sch.uk</a> nhall@rotherhithe.southwark.sch.uk
Headteacher	Galiema Amien-Cloete Lisa Christiansen	020 7237 1586	<a href="mailto:head@rotherhithe.southwark.sch.uk">head@rotherhithe.southwark.sch.uk</a> <a href="mailto:lchristiansen@rotherhithe.southwark.sch.uk">lchristiansen@rotherhithe.southwark.sch.uk</a>
Chair of Governors	Mary Henley	020 7237 1586	office@rotherhithe.southwark.sch.uk

## Vulnerable children

Vulnerable children include those who have a social worker and those children and young people up to the age of 25 with education, health and care (EHC) plans. Further information on vulnerable children can be found in Government's [guidance on vulnerable children and young people](#).

Those who have a social worker include children who have a Child Protection Plan and those who are looked after by the Local Authority. A child may also be deemed to be vulnerable if they have been assessed as being in need or otherwise meet the definition in section 17 of the Children Act 1989.

Those with an EHC plan will be risk-assessed in consultation with the Local Authority and parents, to decide whether they need to continue to be offered a school or college place in order to meet their needs, or whether they can safely have their needs met at home. This could include, if necessary, carers, therapists or clinicians visiting the home to provide any essential services. Many children and young people with EHC plans can safely remain at home.

Eligibility for free school meals in and of itself should not be the determining factor in assessing vulnerability.

Senior leaders, especially the Designated and Deputy Designated Safeguarding Leads know who our most vulnerable children are. They have the flexibility to offer a place to those on the edge of receiving children's social care support.

RPS will continue to work with and support children's social workers to help protect vulnerable children. This includes working with and supporting children's social workers and the local authority virtual school head (VSH) for looked-after and previously looked-after children. The lead person for this in school will be: Galiema Amien-Cloete and Lisa Christiansen

Each vulnerable child will be allocated to a member of the DSL team. Due to the high number of vulnerable children identified at RPS we have delegated weekly calling to the class teacher (under SLT/HT guidance). Where a teacher is unable to maintain regular contact due to ill health this will be re-delegated to a DSL or escalated to the HT. DSLs and class teachers will make phone contact with each allocated child on a regular basis to check their safety and wellbeing by speaking to child not just parent.

DSLs will record summary of conversation on an vulnerable child call log, which is then circulated to DSL team via email. Any unsuccessful contacts, as well as those that did take place will also be recorded. Any urgent safeguarding concerns will be escalated immediately, for example, through consultation with the Southwark Multi Agency

Safeguarding Hub ([MASH](#)) duty (or its equivalent in another LA if the child resides in a different LA) and/or the police immediately.

There is an expectation that vulnerable children who have a social worker will attend an education setting, so long as they do not have underlying health conditions that put them at risk. In circumstances where a parent does not want to bring their child to an education setting, and their child is considered vulnerable, the social worker and RPS will explore the reasons for this directly with the parent.

Where parents are concerned about the risk of the child contracting COVID19, RPS or the social worker will talk through these anxieties with the parent/carer following the advice set out by Public Health England.

We will encourage our vulnerable children and young people to attend a school, including remotely if needed.

### **Attendance monitoring**

Local authorities and education settings do not need to complete their usual day-to-day attendance processes to follow up on non-attendance.

RPS and social workers will agree with parents/carers whether children in need should be attending school – we will then follow up on any pupil that was expected to attend, who does not. We will also follow up with any parent or carer who has arranged care for their child(ren) and the child(ren) subsequently do not attend.

### **HOW WILL THIS LOOK IN OUR SCHOOL?**

To support the above, we will, when communicating with parents and carers, confirm emergency contact numbers are correct and ask for any additional emergency contact numbers where they are available. In all circumstances where a vulnerable child does not take up their place at school, or discontinues, we will notify their social worker.

### **Designated and Deputy Designated Safeguarding Leads in our school**

The Designated Safeguarding Lead (DSL) is: Galiema Amien-Cloete

The Deputy Designated Safeguarding Leads (DDSL) are: Lisa Christiansen, Kofi Danquah, Sue Davies and Nina Hall.

The optimal scenario is to have a trained DSL or DDSL available on site. Where this is not the case, a trained DSL or DDSL will be available to be contacted via phone or online video - for example when working from home.

Where a trained DSL or DDSL is not on site, in addition to the above, a senior leader will assume responsibility for co-ordinating safeguarding on site.

This includes updating and managing access to school's safeguarding data/information using My Concern and liaising with the offsite DSL/DDSL and as required liaising with children's social workers where they require access to children in need and/or to carry out statutory assessments at the school.

It is important that all our staff and volunteers have access to a trained DSL or DDSL. On each day staff on site will be made aware of who that person is and how to speak to them.

The DSL and DDSLs will continue to engage with social workers and attend all multi-agency meetings, which can be done remotely.

## Reporting a concern

Where members of staff have a concern about a child, they should continue to follow the process outlined in our school's Safeguarding (Child Protection) Policy and share the concern with DSL or DDSL via My Concern and with the DSL in person if the concern is an urgent one. Staff members are reminded of the need to report any concern immediately and without delay.

Where staff members are concerned about an adult working with children in the school, they should report the concern to the headteacher. If there is a requirement to make a notification to the headteacher whilst away from school, this should be done via email.

Concerns around the Headteacher should be directed to the Chair of Governors: Mary Henley via the school office

## Safeguarding training and induction

DSL training is very unlikely to take place whilst there remains a threat of the COVID 19 virus. For the period COVID-19 measures are in place, a DSL or DDSL who has been trained will continue to be classed as a trained DSL or DDSL even if they miss their refresher training.

All existing school staff have had safeguarding training and have read part 1 of [Keeping children safe in education \(KCSIE\)](#) (2019). The DSL will communicate with staff any new local arrangements so that they know what to do if they are worried about a child.

Where new members of staff are recruited, or new volunteers enter RPS, they will continue to be provided with a safeguarding induction.

If staff are deployed from another education or children's workforce setting to our school, we will take into account the DfE supplementary guidance on safeguarding children during the COVID-19 pandemic and will accept portability as long as the current employer confirms in writing that:-

- the individual has been subject to an enhanced DBS and children's barred list check
- there are no known concerns about the individual's suitability to work with children
- there is no ongoing disciplinary investigation relating to that individual

Upon arrival, they will be given a copy of the receiving setting's Safeguarding (Child Protection) Policy, confirmation of local processes and confirmation of DSL arrangements.

## Safer recruitment/volunteers and movement of staff

It remains essential that people who are unsuitable are not allowed to enter the children's workforce or gain access to children. When recruiting new staff, RPS will continue to follow the relevant safer recruitment processes for their setting, including, as appropriate, relevant sections in part 3 of [Keeping children safe in education \(KCSIE\)](#).

In response to COVID-19, the Disclosure and Barring Service (DBS) has made changes to its [guidance on standard and enhanced DBS ID checking](#) to minimise the need for face-to-face contact.

Where we are utilising volunteers, we will continue to follow the checking and risk assessment process as set out in paragraphs 167 to 172 of KCSIE. Under no circumstances will a volunteer who has not been checked be left unsupervised or allowed to work in regulated activity.



We will continue to follow the legal duty to refer to the DBS anyone who has harmed or poses a risk of harm to a child or vulnerable adult. Full details can be found at paragraph 163 of KCSIE.

We will continue to consider and make referrals to the Teaching Regulation Agency (TRA) as per paragraph 166 of KCSIE and the TRA's '[Teacher misconduct advice for making a referral](#)'. During the COVID-19 period all referrals will be made by emailing [Misconduct.Teacher@education.gov.uk](mailto:Misconduct.Teacher@education.gov.uk).

Whilst acknowledging the challenge of the current National emergency, it is essential from a safeguarding perspective that any school is aware, on any given day, which staff/volunteers will be in the school or college, and that appropriate checks have been carried out, especially for anyone engaging in regulated activity. As such, we will continue to keep the single central record (SCR) up to date as outlined in paragraphs 148 to 156 in KCSIE.

### **Online safety in schools**

We will continue to provide a safe environment for our pupils, including online. This includes the use of an online filtering system. Where pupils are using computers in school, appropriate supervision will be in place.

### **Children and online safety away from school**

It is important that all staff members who interact with children, including online, continue to look out for signs a child may be at risk. Any such concerns should be dealt with as per our Safeguarding (Child Protection) Policy and where appropriate referrals should still be made to Southwark [MASH](#) (or its equivalent in another LA if the child resides in a different LA) and/or the police immediately.

Online teaching should follow the same principles as set out in our school's code of conduct. We will ensure any use of online learning tools and systems is in line with privacy and data protection/GDPR requirements.

Below are some things to consider when delivering virtual lessons, especially where webcams are involved:

- No one to one sessions, teach in groups only
- Teachers should be in a neutral area where nothing personal or inappropriate can be seen or heard in the background.
- Staff and children must wear suitable clothing, as should anyone else in the household.
- Any computers used should be in appropriate areas, for example, not in bedrooms; and where possible be against a neutral background.
- The live class should be recorded and backed up elsewhere, so that if any issues were to arise, the video can be reviewed.
- Live classes should be kept to a reasonable length of time, or the streaming may prevent the family 'getting on' with their day
- Language must be professional and appropriate, including any family members in the background
- Schools should risk assess the use of live learning using webcams
- Data Controllers need to reassure themselves that any teaching/learning software and/or platforms are suitable for the age groups and raise no privacy issues; or use cases against the providers terms and conditions (for example, no business use of consumer products).



## **Supporting children not in school**

RPS is committed to ensuring the safety and wellbeing of all its children and young people. Where the DSL has identified a child to be on the edge of social care support, or who would normally receive pastoral-type support in school, we will ensure that a robust communication plan is in place for that child or young person. Details of this plan will be recorded appropriately as will a record of contact.

The communication plans can include remote contact, phone contact, door-step visits. Other individualised contact methods will be considered and recorded.

RPS and our DSL will work closely with all stakeholders to maximise the effectiveness of any communication plan. This plan will be reviewed regularly (at least once a fortnight) and where concerns arise, the DSL will consider any referrals as appropriate.

The school will share safeguarding messages on its website and social media pages.

We recognise that school is a protective factor for children and young people and the current circumstances can affect the mental health of pupils and their parents/carers. Teachers at our school need to be aware of this in setting expectations of pupils' work where they are at home.

We will ensure that, where we care for children of critical workers and vulnerable children on site, the appropriate support is in place for them. This will be bespoke to each child and will be recorded appropriately.

## **Supporting children in school**

RPS is committed to ensuring the safety and wellbeing of all its pupils. We will continue to be a safe space for all children to attend and flourish. The Headteacher will ensure that appropriate staff are on site and staff to pupil ratio numbers are appropriate, to maximise safety. We will refer to the Government guidance for education and childcare settings on [how to implement social distancing](#) and continue to follow the advice from Public Health England on handwashing and other measures to limit the risk of spread of COVID19. We will ensure that, where we care for children of critical workers and vulnerable children on site, the appropriate support is in place for them. This will be bespoke to each child and recorded appropriately.

## **Peer on Peer Abuse**

RPS recognises that during the closure a revised process may be required for managing any report of such abuse and supporting victims. Where we receive a report of peer on peer abuse, we will follow the principles as set out in part 5 of KCSIE and those outlined within our Safeguarding (Child Protection) Policy.

The school will listen and work with the young person, parents/carers and any relevant multiagency partner to ensure the safety and security of that young person. Concerns and actions will be recorded appropriately, and appropriate referrals will be made.

## **Support from the Local Authority**

The LADO: Eva Simcock 020 7525 0689

Duty telephone number for enquiries/referrals when LADO is unavailable: 020 7525 3297

The LA's Strategic Lead Officer for safeguarding in education services: the Director of Education Nina Dohel 020 7525 3252

The LA's Schools Safeguarding Coordinator: Apo ÇAĞIRICI 020 7525 2715

Southwark MASH Duty: 020 7525 1921

Southwark Family Early Help Service Duty: 0207 525 1922

We also note the attached list of suggestions from Southwark LA about the arrangements for identification of, and planning for, vulnerable pupils during school closure:

As it is the Government's plan that all pupils, in all year groups, will return to school full-time from the beginning of the 2020 autumn term, we note the Government's [Guidance for full opening: schools](#) / [Guidance for full opening: special schools and other specialist settings](#) / [Actions for early years and childcare providers during the coronavirus \(COVID-19\) outbreak](#) / [What FE colleges and providers will need to do from the start of the 2020 autumn term](#) and in particular the section on safeguarding.

We are aware that pupils may be experiencing a variety of emotions in response to the coronavirus (COVID-19) outbreak, such as anxiety, stress or low mood. This may particularly be the case for vulnerable children, including those with a social worker and young carers. All staff members and volunteers will be vigilant about the possible impacts of the pandemic on pupils' mental wellbeing and act immediately on any safeguarding concerns, including new concerns where children are returning, and share their concerns with designated and deputy designated safeguarding leads. We will put in place appropriate support systems for pupils and parents/carers, including working with and/or referral to relevant outside agencies. We note the Government's [COVID-19: guidance on supporting children and young people's mental health and wellbeing](#). We are aware of the continued importance for our staff to work with and support children's social workers, the local authority virtual school head for looked-after and previously looked-after children and any other relevant safeguarding and welfare partners during this period.

We will continue to ensure that arrangements are in place to keep children not physically attending the school safe, especially online. Where we identify a child to be on the edge of social care support, or who would normally receive pastoral-type support in school, we will ensure that a robust communication plan is in place for that child or young person. Details of this plan will be recorded appropriately as will a record of contact. The communication plans can include; remote contact, phone contact, door-step visits. Other individualised contact methods will be considered and recorded. All our staff who interact with children, including online, will continue to look out for signs a child may be at risk. Any such concerns will be dealt with as per this policy and where appropriate, referrals will continue to be made to relevant agencies. In relation to any child receiving remote education, we note the DfE's [guidance on safeguarding and remote education during coronavirus \(COVID-19\)](#) in terms of keeping children as well as staff members safe online.

## **RESPONSIBILITIES AND IMMEDIATE ACTION**

Safeguarding and promoting the welfare of children in our school is the responsibility of the whole school community. All adults working in this School (including visiting staff, volunteers and students on placement) are required to report instances of actual or suspected child abuse or neglect to the Designated Safeguarding Lead who is a member of the school's leadership team.

## **The Designated Safeguarding Lead is: Galiema Amien – Cloete – Executive Head Teacher**

The Deputy Designated Safeguarding Lead(s) are:

**Lisa Christiansen – Head of School/LAC Designated Teacher (SLT)**

**Kofi Danquah – Safeguarding & Intervention Officer**

**Nina Hall – English Lead (SLT)**

**Susan Davies- Assistant Head Teacher (SLT)**

The Designated Safeguarding Lead (DSL) takes lead responsibility for safeguarding and child protection (including online safety) and provides advice and support to other staff on child welfare and child protection matters, takes part in strategy discussions and inter-agency meetings, and/or supports other staff to do so, and contributes to the assessment of children. DSL is the first point of contact for external agencies that are pursuing Child Protection investigations and co-ordinates the school's representation at CP conferences and Core Group meetings (including the submission of written reports for conferences). When an individual concern/incident is brought to the notice of the Designated Safeguarding Lead, they will be responsible for deciding upon whether or not this should be reported to other agencies as a safeguarding issue. Where there is any doubt as to the seriousness of this concern, or disagreement between the Designated Safeguarding Lead and the member of staff reporting the concern, advice will be sought from the Deputy Designated Safeguarding Lead (DDSL) or the LA's Strategic Lead Officer for safeguarding in education services. If a child is in immediate danger or is at risk of harm, a referral will be made to Southwark Multi Agency Safeguarding Hub ([MASH](#)) (or its equivalent in another LA if the child resides in a different LA) and/or the police immediately.

Although all staff should be aware of the process for making referrals to children's social care and for statutory assessments that may follow a referral, along with the role they might be expected to play in such assessments, the DSL (and any deputies) are most likely to have a complete safeguarding picture and be the most appropriate person to advise on the response to safeguarding concerns. The DSL or a deputy will always be available to discuss safeguarding concerns. If in exceptional circumstances, the DSL (or deputy) is not available, this should not delay appropriate action being taken. Staff should consider speaking to a member of the senior leadership team and/or take advice from local children's social care. In these circumstances, any action taken should be shared with the DSL (or deputy) as soon as is practically possible.

### **THE ROLE OF THE GOVERNING BODY**

The Governing Body will ensure that they comply with their duties under legislation and that the policies, procedures and training in the school are effective and comply with the law at all times. Governors are expected to receive appropriate training on safeguarding at induction that is updated regularly. In addition, they should receive information (for example, via emails, e-bulletins and newsletters) on safeguarding and child protection at least annually so that they can demonstrate knowledge of their responsibilities relating to the protection of children, young people and vulnerable adults.

The Governing Body will ensure that the school contributes to inter-agency working in line with statutory guidance "[Working Together to Safeguard Children](#)" and that the school's safeguarding arrangements take into account the procedures and practice of the local authority as part of the inter-agency safeguarding procedures set up by the Southwark Safeguarding Children Partnership (SSCP).

The Governing Body has formally adopted this policy and will review its contents annually or sooner if any legislative or regulatory changes are notified to it by the designated governor or the headteacher.

The Governing Body has nominated *Christine McCree* as a lead to take leadership responsibility for the school's safeguarding arrangements.

Concerns about and allegations of abuse made against the headteacher will be referred to the chair of governors who will liaise with the LA's designated officer (DO) and partner agencies and will attend any strategy meetings called in respect of such an allegation against the headteacher.

As a good practice, the headteacher will provide termly report to the Governing Body outlining details of any safeguarding issues that have arisen during the term and the outcome of any cases identified. These reports will respect all issues of confidentiality and will not therefore identify any person(s) by name.

Also as a good practice, the nominated governor will meet on a regular basis with the DSL to monitor the school's safeguarding arrangements and both the volume and progress of cases where a concern has been raised to ensure that the school is meeting its duties in respect of safeguarding.

### **Types of child abuse and neglect**

**Abuse:** a form of maltreatment of a child. Somebody may abuse or neglect a child by inflicting harm, or by failing to act to prevent harm. They may be abused by an adult or adults or another child or children.

**Physical abuse:** a form of abuse which may involve hitting, shaking, throwing, poisoning, burning or scalding, drowning, suffocating or otherwise causing physical harm to a child. Physical harm may also be caused when a parent or carer fabricates the symptoms of, or deliberately induces, illness in a child.

**Emotional abuse:** the persistent emotional maltreatment of a child such as to cause severe and adverse effects on the child's emotional development. It may involve conveying to a child that they are worthless or unloved, inadequate, or valued only insofar as they meet the needs of another person. It may include not giving the child opportunities to express their views, deliberately silencing them or 'making fun' of what they say or how they communicate. It may feature age or developmentally inappropriate expectations being imposed on children. These may include interactions that are beyond a child's developmental capability as well as overprotection and limitation of exploration and learning, or preventing the child participating in normal social interaction.

It may involve seeing or hearing the ill-treatment of another. It may involve serious bullying (including cyberbullying), causing children frequently to feel frightened or in danger, or the exploitation or corruption of children. Some level of emotional abuse is involved in all types of maltreatment of a child, although it may occur alone.

**Sexual abuse:** involves forcing or enticing a child or young person to take part in sexual activities, not necessarily involving a high level of violence, whether or not the child is aware of what is happening. The activities may involve physical contact, including assault by penetration (for example rape or oral sex) or non-penetrative acts such as masturbation, kissing, rubbing and touching outside of clothing. They may also include non-contact activities, such as involving children in looking at, or in the production of, sexual images, watching sexual activities, encouraging children to behave in sexually inappropriate ways, or grooming a child in preparation for abuse (including via the internet). Sexual abuse is not solely perpetrated by adult males. Women can also commit acts of sexual abuse, as can other children.

**Neglect:** the persistent failure to meet a child's basic physical and/or psychological needs, likely to result in the serious impairment of the child's health or development. Neglect may occur during pregnancy as a result of maternal substance abuse. Once a child is born, neglect may involve a parent or carer failing to: provide adequate food, clothing and shelter (including exclusion from home or abandonment); protect a child from physical and emotional harm or danger; ensure adequate supervision (including the use of inadequate care-givers); or ensure access to appropriate medical care or treatment. It may also include neglect of, or unresponsiveness to, a child's basic emotional needs.

Safeguarding incidents and/or behaviours can be associated with factors outside the school or college and/or can occur between children outside the school or college. All staff, but especially the DSL and DDSLs will be considering the context within which such incidents and/or behaviours occur. This is known as [Contextual Safeguarding](#), which simply means assessments of children should consider whether wider environmental factors are present in a child's life that are a threat to their safety and/or welfare.

**In addition to these types of abuse and neglect, members of staff will also be alert to following specific safeguarding issues:**

### **Mental Health**

We are aware that mental health problems can, in some cases, be an indicator that a child has suffered or is at risk of suffering abuse, neglect or exploitation. Only appropriately trained professionals should attempt to make a diagnosis of a mental health problem. Our staff members however, are well placed to observe children day-to-day and identify those whose behaviour suggests that they may be experiencing a mental health problem or be at risk of developing one. Where children have suffered abuse and neglect, or other potentially traumatic adverse childhood experiences, this can have a lasting impact throughout childhood, adolescence and into adulthood. It is key that our staff members are aware of how these children's experiences can impact on their mental health, behaviour and education. If staff have a mental health concern about a child that is also a safeguarding concern, this will be shared with the DSL with a view to referring to appropriate agencies following the referral procedures. We also note the DfE's advice and guidance on [Mental Health and Behaviour in Schools](#).

### **Child Criminal Exploitation (CCE)**

CCE is where an individual or group takes advantage of an imbalance of power to coerce, control, manipulate or deceive a child into any criminal activity in exchange for something the victim needs or wants, and/or for the financial or other advantage of the perpetrator or facilitator and/or through violence or the threat of violence. The victim may have been criminally exploited even if the activity appears consensual. CCE does not always involve physical contact; it can also occur through the use of technology.

CCE can include children being forced to work in cannabis factories, being coerced into moving drugs or money across the country (county lines), forced to shoplift or pickpocket, or to threaten other young people. Some of the indicators of CCE are: children who appear with unexplained gifts or new possessions; children who associate with other young people involved in exploitation; children who suffer from changes in emotional well-being; children who misuse drugs and alcohol; children who go missing for periods of time or regularly come home late; and children who regularly miss school or education or do not take part in education. Any possible CCE case will be shared with the DSL with a view to referring to appropriate agencies following the referral procedures.

## **Child Sexual Exploitation (CSE)**

CSE is a type of sexual abuse in which children are sexually exploited for money, power or status. Children or young people may be tricked into believing they are in a loving, consensual relationship. They might be invited to parties and given drugs and alcohol. They may also be groomed online. Some indicators of children being sexually exploited are: going missing for periods of time or regularly coming home late; regularly missing school or education or not taking part in education; appearing with unexplained gifts or new possessions; associating with other young people involved in exploitation; having older boyfriends or girlfriends; suffering from sexually transmitted infections; mood swings or changes in emotional wellbeing; drug and alcohol misuse and displaying inappropriate sexualised behaviour. A child under the age of 13 is not legally capable of consenting to sex (it is statutory rape) or any other type of sexual touching. Sexual activity with a child under 16 is also an offence. It is an offence for a person to have a sexual relationship with a 16 or 17 year old if that person holds a position of trust or authority in relation to the young person. Non consensual sex is rape whatever the age of the victim. If the victim is incapacitated through drink or drugs, or the victim or his or her family has been subject to violence or the threat of it, they can not be considered to have given true consent and therefore offences may have been committed. Child sexual exploitation is therefore potentially a child protection issue for all children under the age of 18.

Where it comes to our notice that a child under the age of 13 is, or may be, sexually active, whether or not they are a pupil of this school, this will result in an immediate referral to Children's Services. In the case of a young person between the ages of 13 and 16, an individual risk assessment will be conducted in accordance with the [London Child Protection Procedures](#). This will determine how and when information will be shared with parents and the investigating agencies.

### **'Sexting'**

Creating and sharing sexual photos and videos of under-18s is illegal. Sharing youth produced sexual imagery, which is commonly known as 'sexting' covers the incidents where

- A person under the age of 18 creates and shares sexual imagery of themselves with a peer under the age of 18
- A person under the age of 18 shares sexual imagery created by another person under the age of 18 with a peer under the age of 18 or an adult
- A person under the age of 18 is in possession of sexual imagery created by another person under the age of 18.

When such an incident involving youth produced sexual imagery comes to a member of staff's attention, this will be shared with the designated safeguarding lead with a view to referring to appropriate agencies following the referral procedures. Further information and advice on youth produced sexual imagery is available in the non-statutory guidance produced by the UK Council for Child Internet Safety (UKCCIS) '[Sexting in schools and colleges](#)'.

### **Serious violence**

All staff will be made aware of indicators, which may signal that children are at risk from, or are involved with serious crime. These may include increased absence from school, a change in friendships or relationships with older individuals or groups, a significant decline in performance, signs of self-harm or significant change in wellbeing, or signs of assault or unexplained injuries. Unexplained gifts or new possessions could also indicate that children have been approached by, or are involved with, individuals associated with criminal networks or gangs.



We are also aware that fear and a need for self-protection is a key motivation for children to carry a weapon – it affords a child a feeling of power. Neighbourhoods with high levels of deprivation and social exclusion generally have the highest rates of gun and knife crime. Children are more likely to carry knives and other weapons than guns. All staff will be aware of the associated risks and will share any concerns about or knowledge of such children immediately with the DSL. Further advice on these is available in the Home Office documents [Preventing youth violence and gang involvement](#) and [Criminal exploitation of children and vulnerable adults: county lines](#).

### **Child criminal exploitation: county lines**

Criminal exploitation of children is a geographically widespread form of harm that is a typical feature of county lines criminal activity: drug networks or gangs groom and exploit children and young people to carry drugs and money from urban areas to suburban and rural areas, market and seaside towns. Key to identifying potential involvement in county lines are missing episodes, when the victim may have been trafficked for the purpose of transporting drugs. Like other forms of abuse and exploitation, county lines exploitation can affect any child or young person (male or female) under the age of 18 years; can still be exploitation even if the activity appears consensual; can involve force and/or enticement-based methods of compliance and is often accompanied by violence or threats of violence; can be perpetrated by individuals or groups, males or females, and young people or adults; and is typified by some form of power imbalance in favour of those perpetrating the exploitation. Whilst age may be the most obvious, this power imbalance can also be due to a range of other factors including gender, cognitive ability, physical strength, status, and access to economic or other resources.

### **Peer on peer abuse**

Children are capable of abusing their peers. This can take different forms, such as bullying (including cyberbullying), physical abuse (such as hitting, kicking, shaking, biting, hair pulling, or otherwise causing physical harm; violence, particularly pre-planned, forcing other children to use drugs or alcohol, initiation/hazing type violence and rituals), emotional abuse (blackmail or extortion, threats and intimidation), sexual violence, such as rape, assault by penetration and sexual harassment, such as sexual comments, remarks, jokes and online sexual harassment, sexting, sexual abuse (indecent exposure, indecent touching or serious sexual assaults, forcing other children to watch pornography or take part in sexting) and sexual exploitation (encouraging other children to engage in inappropriate sexual behaviour, having an older boyfriend/girlfriend, associating with unknown adults or other sexually exploited children, staying out overnight, photographing or videoing other children performing indecent acts) and upskirting, which typically involves taking a picture under a person's clothing without them knowing, with the intention of viewing their genitals or buttocks to obtain sexual gratification or cause the victim humiliation, distress or alarm. Upskirting is now a criminal offence. Although it is more likely that girls will be victims and boys perpetrators, all peer on peer abuse is unacceptable and will be taken seriously. We do not tolerate these or pass them off as "banter", "just having a laugh" or "part of growing up".



The school has a strong commitment to an anti-bullying policy and will consider all coercive acts and peer on peer abuse within a Child Protection context. We recognise that some pupils will sometimes negatively affect the learning and wellbeing of other pupils and their behaviour will be dealt with under the school's behaviour policy. As a school, we will minimise the risk of allegations against other pupils by providing a developmentally appropriate PSHE syllabus which develops pupils' understanding of acceptable behaviour and keeping themselves safe, having systems in place for any pupil to raise concerns with staff, knowing that they will be listened to, believed and valued, delivering targeted work on assertiveness and keeping safe to those pupils identified as being at risk, developing robust risk assessments and providing targeted work for pupils identified as being a potential risk to other pupils. Any possible peer on peer abuse case will be shared with the DSL with a view to referring to appropriate agencies following the referral procedures. We also note the DfE's advice and guidance on [Preventing and Tackling Bullying](#).

### **Sexual violence and sexual harassment between children**

Sexual violence and sexual harassment can occur between two children of any age and sex. It can also occur through a group of children sexually assaulting or sexually harassing a single child or group of children. It can occur online and offline (both physically and verbally). It is more likely that girls will be the victims of sexual violence and sexual harassment and more likely it will be perpetrated by boys. Children who are victims of sexual violence and sexual harassment will find the experience stressful and distressing. This will affect their educational attainment. Staff will share any concerns about or knowledge of such incidents immediately with the DSL with a view to ensuring that support systems are in place for victims (and alleged perpetrators). We take these incidents seriously and ensure that victims are protected, offered appropriate support and every effort is made to ensure their education is not disrupted. Where necessary, we will work with relevant external agencies to address the issue, which may include a referral to MASH and reporting to the Police. Further information is available in 'Part 5: Child on child sexual violence and sexual harassment' of DfE guidance "[Keeping children safe in education](#)".

### **Domestic abuse**

Domestic violence and abuse is any incident or pattern of incidents of controlling, coercive, threatening behaviour, violence or abuse between those aged 16 or over who are, or have been, intimate partners or family members regardless of gender or sexuality. The abuse can encompass, but is not limited to psychological, physical, sexual, financial and emotional. All children can witness and be adversely affected by domestic abuse in the context of their home life where domestic abuse occurs between family members. Exposure to domestic abuse and/or violence can have a serious, long lasting emotional and psychological impact on children. In some cases, a child may blame themselves for the abuse or may have had to leave the family home as a result. If members of staff have a concern about or knowledge of any domestic abuse incidents, they will share it immediately with the DSL with a view to referring to appropriate agencies.

Information is available about [Domestic abuse and how to get help in Southwark](#). Southwark Council's support and service provider Solace (020 7593 1290, [southwark@solacewomensaid.org](mailto:southwark@solacewomensaid.org)) offer free and confidential support for women and men aged 16 or over who are survivors of domestic abuse.

### **Operation Encompass**

At Rotherhithe Primary School, we are working in partnership with the Metropolitan Police and Children's Services to identify and provide appropriate support to pupils who have experienced domestic violence in their household; this scheme is called Operation Encompass.

The purpose of Operation Encompass is to safeguard and support children and young people who have been involved in or witness to a domestic abuse incident. Domestic abuse impacts on children in a number of ways. Children are at increased risk of physical injury during an incident, either by accident or because they attempt to intervene. Even when not directly injured, children are greatly distressed by witnessing the physical and emotional suffering of a parent.

Encompass has been created to highlight this situation. It is the implementation of key partnership working between the police and schools. The aim of sharing information with local schools is to allow 'Key Adults' the opportunity of engaging with the child and to provide access to support that allows them to remain in a safe but secure familiar environment.

In order to achieve this, the Multi-Agency Safeguarding Hub ([MASH](#)) will share police information of all domestic incidents where one of our pupils has been present, with the Designated Safeguarding Lead(s) (DSL). On receipt of any information, the DSL will decide on the appropriate support the child requires, this should be covert dependent on the needs and wishes of the child. All information sharing and resulting actions will be undertaken in accordance with the Metropolitan Police and MASH Encompass Protocol Data Sharing Agreement. We will record this information and store this information in accordance with the record keeping procedures outlined in this policy.

The purpose and procedures in Operation Encompass have been shared with all parents and governors, is detailed as part of the school's Safeguarding Policy and published on our school website.

### **Violence Against Women and Girls (VAWG)**

VAWG is defined as any act of gender-based violence that results in, or is likely to result in physical, sexual or psychological harm or suffering to women including threats of such acts, coercion or arbitrary deprivation of liberty, whether occurring in public or private life. VAWG is the umbrella term which brings together multiple forms of serious violence such as crimes committed in the name of "honour"; domestic abuse; female genital mutilation (FGM); forced marriage; sexual violence, abuse, exploitation and rape; stalking; harassment; trafficking for sexual exploitation; prostitution. If members of staff have a concern about or knowledge of any VAWG incidents, they will share it immediately with the DSL with a view to referring to appropriate agencies. We also note [Southwark's VAWG Strategy](#).

### **So-called 'honour-based' abuse (HBA) (including Female Genital Mutilation and Forced Marriage)**

HBA includes incidents or crimes which have been committed to protect or defend the honour of the family and/or the community, including female genital mutilation (FGM), forced marriage, and practices such as breast ironing. Abuse committed in the context of preserving "honour" often involves a wider network of family or community pressure and can include multiple perpetrators. All forms of HBV are abuse (regardless of the motivation) and will be handled and escalated as such. If members of staff have a concern about or knowledge of a child that might be at risk of HBA or who has suffered from HBA, they will share it immediately with the DSL with a view to referring to appropriate agencies.

## **Female Genital Mutilation (FGM)**

FGM is a procedure where the female genital organs are injured or changed and there is no medical reason for this. It is frequently a very traumatic and violent act for the victim and can cause harm in many ways. The practice can cause severe pain and there may be immediate and/or long-term health consequences, including mental health problems, difficulties in childbirth, causing danger to the child and mother; and/or death.

FGM is a deeply embedded social norm, practised by families for a variety of complex reasons. It is often thought to be essential for a girl to become a proper woman, and to be marriageable. The practice is not required by any religion.

FGM is an unacceptable practice for which there is no justification. It is child abuse and a form of violence against women and girls.

FGM is prevalent in 30 countries and is a deeply rooted practice, widely carried out mainly among specific ethnic populations in Africa and parts of the Middle East and Asia. While FGM is concentrated in countries around the Atlantic coast to the Horn of Africa, in areas of the Middle East like Iraq and Yemen, it has also been documented in communities in Colombia, Iran, Israel, Oman, The United Arab Emirates, The Occupied Palestinian Territories, India, Indonesia, Malaysia, Pakistan and Saudi Arabia. It has also been identified in parts of Europe, North America and Australia.

FGM is illegal in the UK. It is estimated that approximately 60,000 girls aged 0-14 were born in England and Wales to mothers who had undergone FGM and approximately 103,000 women aged 15-49 and approximately 24,000 women aged 50 and over who have migrated to England and Wales are living with the consequences of FGM. In addition, approximately 10,000 girls aged under 15 who have migrated to England and Wales are likely to have undergone FGM.

We note a new duty that was introduced on 31 October 2015 that requires teachers, which includes qualified teachers or persons who are employed or engaged to carry out teaching work in schools and other institutions to report 'known' cases of FGM in girls aged under 18 to the police. The duty applies to any teacher who is employed or engaged to carry out 'teaching work', whether or not they have qualified teacher status, in maintained schools, academies, free schools, independent schools, non-maintained special schools, sixth form colleges, 16-19 academies, relevant youth accommodation or children's homes in England. The duty does not apply in relation to suspected cases – it is limited to 'known' cases' (i.e. those which are visually identified or disclosed to a professional by the victim). It will be rare for teachers to see visual evidence, and they should not be examining pupils or students. The duty does not apply in cases where the woman is over 18 at the time of the disclosure/discovery of FGM (even if she was under 18 when the FGM was carried out). Further information on this duty can be found in the document "[Mandatory Reporting of Female Genital Mutilation – procedural information](#)". A useful summary of the FGM mandatory reporting duty is available in [FGM Fact Sheet](#).

Teachers in our school will personally report to the police cases where they discover that an act of FGM appears to have been carried out. Unless the teacher has good reason not to, they will still discuss any such case with the designated safeguarding lead (or deputy) with a view to involving children's social care as appropriate.

## **Forced marriage**

Forcing a person into a marriage is a crime in England and Wales. A forced marriage is one entered into without the full and free consent of one or both parties and where violence, threats or any other form of coercion is used to cause a person to enter into a marriage.

Threats can be physical or emotional and psychological. A lack of full and free consent can be where a person does not consent or where they cannot consent (if they have learning disabilities, for example). Nevertheless, some perpetrators use perceived cultural practices as a way to coerce a person into marriage. We note The Forced Marriage Unit's [statutory guidance](#) and especially Chapter 7 on page 32 of the [Multi-agency guidelines](#), which is specifically aimed at teachers, lecturers and other members of staff within schools, colleges and universities. Any possible forced marriage case will be shared with the DSL with a view to referring to appropriate agencies following the referral procedures.

## **Preventing Radicalisation**

The Counter-Terrorism and Security Act 2015 places a duty on specified authorities, including local authorities and childcare, education and other children's services providers, in the exercise of their functions, to have due regard to the need to prevent people from being drawn into terrorism ("the Prevent duty"). Young people can be exposed to extremist influences or prejudiced views, in particular those via the internet and other social media. Schools can help to protect children from extremist and violent views in the same ways that they help to safeguard children from drugs, gang violence or alcohol.

Examples of the ways in which people can be vulnerable to radicalisation and the indicators that might suggest that an individual might be vulnerable:

- Example indicators that an individual is engaged with an extremist group, cause or ideology include: spending increasing time in the company of other suspected extremists; changing their style of dress or personal appearance to accord with the group; their day-to-day behaviour becoming increasingly centred around an extremist ideology, group or cause; loss of interest in other friends and activities not associated with the extremist ideology, group or cause; possession of material or symbols associated with an extremist cause (e.g. the swastika for far right groups); attempts to recruit others to the group/cause/ideology; or communications with others that suggest identification with a group/cause/ideology.
- Example indicators that an individual has an intention to use violence or other illegal means include: clearly identifying another group as threatening what they stand for and blaming that group for all social or political ills; using insulting or derogatory names or labels for another group; speaking about the imminence of harm from the other group and the importance of action now; expressing attitudes that justify offending on behalf of the group, cause or ideology; condoning or supporting violence or harm towards others; or plotting or conspiring with others.
- Example indicators that an individual is capable of contributing directly or indirectly to an act of terrorism include: having a history of violence; being criminally versatile and using criminal networks to support extremist goals; having occupational skills that can enable acts of terrorism (such as civil engineering, pharmacology or construction); or having technical expertise that can be deployed (e.g. IT skills, knowledge of chemicals, military training or survival skills).

The examples above are not exhaustive and vulnerability may manifest itself in other ways. There is no single route to terrorism nor is there a simple profile of those who become involved. For this reason, any attempt to derive a 'profile' can be misleading. It must not be assumed that these characteristics and experiences will necessarily lead to individuals becoming terrorists, or that these indicators are the only source of information required to make an appropriate assessment about vulnerability.

**Channel** is a voluntary, confidential support programme which focuses on providing support at an early stage to people who are identified as being vulnerable to being drawn into terrorism that uses existing collaboration between local authorities, the police, statutory partners (such as the education sector, social services, children's and youth services and offender management services) and the local community.

We will refer children at risk of harm as a result of involvement or potential involvement in extremist activity to Southwark Multi Agency Safeguarding Hub ([MASH](#)). The MASH will share the referral details of new referrals with the Prevent lead police officer and LA Prevent coordinator at the point the referral is received. The referral will then be processed through the MASH multi agency information sharing system and parallel to this the Prevent police officer will be carrying out initial screening checks. The Prevent police officer will make a referral to the Channel Practitioner if there are sufficient concerns.

### **Private Fostering**

Private fostering is when a child under the age of 16 (under 18 if disabled) is cared for by someone who is not their parent or a 'close relative'. This is a private arrangement made between a parent and a carer, for 28 days or more. Close relatives are defined as step-parents, grandparents, brothers, sisters, uncles or aunts (whether of full blood, half blood or by marriage). Great grandparents, great aunts, great uncles and cousins are not regarded as close relatives.

The law requires that Southwark Council should be notified if anyone is looking after someone else's child for 28 days or more. The purpose of the council's involvement is to support the child and private foster family (and wherever possible the biological parent/s) with any issues arising. These may be practical issues such as benefits, housing, immigration or emotional issues such as keeping contact with biological family, maintaining cultural identity.

If we become aware of a child in a private fostering arrangement within Southwark, we will notify the council's Multi Agency Safeguarding Hub ([MASH](#)) by emailing [MASH@southwark.gov.uk](mailto:MASH@southwark.gov.uk) or calling **020 7525 1921**. Advice about whether there is a need to notify the council, can be obtained by calling **07539 346808** or sending an email to [privatefosteringadvice@southwark.gov.uk](mailto:privatefosteringadvice@southwark.gov.uk).

### **REFERRALS**

Where there is a safeguarding concern, we take into account the child's wishes and feelings when determining what action to take and what services to provide. We have systems in place for children to express their views and give feedback. We acknowledge that children who are affected by abuse or neglect may demonstrate their needs and distress through their words, actions, behaviour, demeanour, school work or other children. Ultimately, all our systems and processes operate with the best interests of the child at heart.

Referrals to services regarding concerns about a child or family typically fall into three categories:

- Early Help Services;
- Child in need - Section 17 (Children Act 1989) referrals;
- Child protection - Section 47 (Children Act 1989) referrals.

[The Southwark Safeguarding Board Multi Agency Threshold Guide](#) sets out the different levels of need and detailed guidance about how concerns within these different levels should be responded to by Southwark agencies.



Safeguarding referrals should be made to Southwark Multi Agency Safeguarding Hub ([MASH](#)) via [the Referral Form](#) and copied to the LA's Schools Safeguarding Coordinator. Prior to any written form being sent as a referral to social care, there should be a verbal consultation with the MASH social worker or manager, by calling the duty desk on **020 7525 1921**, to ensure that making a referral is an appropriate action. The parent/carer will normally be contacted to obtain their consent before a referral is made. However, if the concern involves, for example alleged or suspected child sexual abuse, Honour Based Abuse, fabricated or induced illness or the Designated Safeguarding Lead has reason to believe that informing the parent at this stage might compromise the safety of the child or a staff member, nothing should be said to the parent/carer ahead of the referral, but a rationale for the decision to progress without consent should be provided with the referral.

When we make a referral, the local authority should make a decision, within one working day of a referral being made, about the type of response that is required and should let us, as the referrer know the outcome. We will follow up if this information is not forthcoming.

If, after a referral, the child's situation does not appear to be improving, we will consider following local escalation procedures to ensure that the concerns have been addressed and, most importantly, that the child's situation improves.

The [Early Help Referral Form](#) will be used to request additional early help for a family when the needs of a child are beyond the level of support that can be provided by universal services. Southwark's [Family Early Help Service](#) Duty number is **020 7525 1922**, which will give four options:

- General enquiries and signposting
- Family Early Help Duty Manager for general advice including consultations around potential and new referrals and current casework
- Education, Inclusion and Attendance support and advice including all enforcement activity
- Parenting support and advice and information on parenting course and group work programmes

In circumstances where a child has an unexplained or suspicious injury that requires urgent medical attention, the CP referral process should not delay the administration of first aid or emergency medical assistance. **If a pupil is thought to be at immediate risk because of parental violence, intoxication, substance abuse, mental illness or threats to remove the child during the school day, for example, urgent Police intervention will be requested.**

Where a child sustains a physical injury or is distressed as a result of reported chastisement, or alleges that they have been chastised by the use of an implement or substance, this will immediately be reported for investigation.

All parents applying for places at this school will be informed of our safeguarding responsibilities and the existence of this policy. In situations where pupils sustain injury or are otherwise affected by an accident or incident whilst they are the responsibility of the school, parents will be notified of this as soon as possible.

Rotherhithe Primary School recognises the need to be alert to the risks posed by strangers or others (including the parents or carers of other pupils) who may wish to harm children in school or pupils travelling to and from school and will take all reasonable steps to lessen such risks.

### **VULNERABLE PUPILS**

Particular vigilance will be exercised in respect of pupils who are subject to Child Protection Plan and any incidents or concerns involving these children will be reported immediately to the allocated Social Worker (and confirmed in writing; copied to the LA's Schools Safeguarding Coordinator).

If the pupil in question is a Looked-After child, this will also be brought to the notice of the Designated Person with responsibility for children in public care. The School's Designated Teacher for Looked-after and Previously Looked-after Children will work with the virtual school head, who manages pupil premium plus for looked after children, to discuss how funding can be best used to support the progress of looked after children in the school and meet the needs identified in the child's personal education plan. The designated teacher will also work with the virtual school head to promote the educational achievement of previously looked after children. We note the DfE's statutory guidance [Designated teacher for looked-after and previously looked-after children](#).

Local authorities should share with our school/setting the fact a child has a social worker, and the DSL will hold and use this information so that decisions can be made in the best interests of the child's safety, welfare and educational outcomes. This will be considered as a matter of routine. There are clear powers to share this information under existing duties on both local authorities and schools and colleges to safeguard and promote the welfare of children. Where children need a social worker, this will inform decisions about safeguarding (for example, responding to unauthorised absence or missing education where there are known safeguarding risks) and about promoting welfare (for example, considering the provision of pastoral and/or academic support, alongside action by statutory services).

We acknowledge that children with special educational needs (SEN) and disabilities can face additional safeguarding challenges. We are aware that additional barriers can exist when recognising abuse and neglect in this group of children. This can include assumptions that indicators of possible abuse such as behaviour, mood and injury relate to the child's disability without further exploration; children with SEN and disabilities can be disproportionately impacted by things like bullying- without outwardly showing any signs; and communication barriers and difficulties in overcoming these barriers.

If a pupil discloses that they have witnessed domestic abuse or it is suspected that they may be living in a household which is affected by family violence, this will be referred to the Designated Safeguarding Lead as a safeguarding issue.

The School also acknowledges the additional need for support and protection of children who are vulnerable by virtue of homelessness, refugee/asylum seeker status, the effects of substance abuse within the family, those who are young carers, mid-year admissions, pupils who are excluded from school and pupils where English is an additional language, particularly for very young children, using the translation service if necessary.

## **TRAINING**

All staff members will receive appropriate safeguarding and child protection training (including online safety) which is regularly updated. In addition, all staff members will receive safeguarding and child protection updates (for example, via email, e-bulletins and staff meetings), as required, but at least annually, to provide them with relevant skills and knowledge to safeguard children effectively. All newly recruited staff (teaching and non-teaching) and Governors will be apprised of this policy and will be required to attend relevant LA or Southwark Safeguarding Children Partnership (SSCP) training. In addition, all new staff and temporary staff will be required to attend an induction session with the Designated Safeguarding Lead or their deputy on their first day in the school.



The Designated Safeguarding Lead (and their Deputies) will attend the LA's dedicated induction course and then refresher training at least every two years. The designated safeguarding lead will also undertake Prevent awareness training and will be able to understand the unique risks associated with online safety. In addition to this formal training, their knowledge and skills will be refreshed (for example, via e-bulletins, meeting other designated safeguarding leads or simply taking time to read and digest safeguarding developments) at regular intervals, as required, but at least annually, to allow them to understand and keep up with any developments relevant to their role. Designated staff will be encouraged to attend appropriate network meetings and to participate in the [multi-agency training programme](#) organised by the Southwark Safeguarding Children Partnership (SSCP).

## **RECRUITMENT**

Rotherhithe Primary School is committed to the principles of safer recruitment and, as part of that, adopts recruitment procedures that help deter, reject and/or identify people who might abuse children. Safe recruitment processes are followed and all staff recruited to the school will be subject to appropriate identity, qualification and health checks. References will be verified and appropriate criminal record checks [Disclosure and Barring Service (DBS) checks], barred list checks and prohibition checks will be undertaken. The level of DBS check required, and whether a prohibition check is required, will depend on the role and duties of an applicant to work in the school, as outlined in Part three of the DfE guidance "[Keeping children safe in education](#)". We will also have regard to DfE's statutory guidance for schools about the employment of staff disqualified from childcare "[Disqualification under the Childcare Act 2006](#)", which also contains information about 'disqualification by association'.

Relevant members of staff and governors who are involved in recruitment will undertake safer recruitment training. The school will ensure that at least one person on any appointment panel has undertaken safer recruitment training in line with staffing regulations.

This School will only use employment agencies which can demonstrate that they positively vet their supply staff and will report the misconduct of temporary or agency staff to the agency concerned and to the LA. Staff joining the School on a permanent or temporary basis will be given a copy of this policy. Additionally, the Staff Handbook confirms CP procedures within the School.

## **VOLUNTEERS**

Any parent or other person/organisation engaged by the school to work in a voluntary capacity with pupils will be subject to all reasonable vetting procedures and Criminal Records Checks.

Under no circumstances a volunteer in respect of whom no checks have been obtained will be left unsupervised or allowed to work in regulated activity.

Volunteers who on an unsupervised basis teach or look after children regularly, or provide personal care on a one-off basis in our school are deemed to be in regulated activity. We will obtain an enhanced DBS certificate (which will include barred list information) for all volunteers who are new to working in regulated activity. Existing volunteers in regulated activity do not have to be re-checked if they have already had a DBS check (which includes barred list information). However, we may conduct a repeat DBS check (which will include barred list information) on any such volunteer should we have any concerns.

The law has removed supervised volunteers from regulated activity. There is no legal requirement to obtain DBS certificate for volunteers who are not in regulated activity and who are supervised regularly and on ongoing day to day basis by a person who is in regulated activity, but an enhanced DBS check without a barred list check may be requested following a risk assessment.

Further information on checks on volunteers can be found in Part three of the DfE guidance "[Keeping children safe in education](#)".

Volunteers will be subject to the same code of conduct as paid employees of the school.

Voluntary sector groups that operate within this school or provide off-site services for our pupils or use school facilities will be expected to adhere to this policy or operate a policy which is compliant with the procedures adopted by the Southwark Safeguarding Children Partnership (SSCP). Premises lettings and loans are subject to acceptance of this requirement.

### **STAFF CODE OF CONDUCT**

All staff (paid and voluntary) are expected to adhere to a code of conduct in respect of their contact with pupils and their families. The Teachers' Standards 2012 state that all teachers, including headteachers, should safeguard children's wellbeing and maintain public trust in the teaching profession as part of their professional duties. Children will be treated with respect and dignity and no punishment, detention, restraint, sanctions or rewards are allowed outside of those detailed in the school's Behaviour Management Policy. Whilst it would be unrealistic and undesirable to preclude all physical contact between adults and children, staff are expected to exercise caution and avoid placing themselves in a position where their actions might be open to criticism or misinterpretation. Where incidents occur which might otherwise be misconstrued, or in the exceptional circumstances where it becomes necessary to physically restrain a pupil for their own protection or others' safety, this will be appropriately recorded and reported to the Headteacher and parents. Any physical restraint used will comply with DfE guidance "[Use of reasonable force in schools](#)".

Except in cases of emergency, first aid will only be administered by qualified First Aiders. If it is necessary for the child to remove clothing for first aid treatment, there will, wherever possible, be another adult present. If a child needs help with toileting, nappy changing or washing after soiling themselves, another adult should be present or within earshot. All first aid treatment and non-routine changing or personal care will be recorded and shared with parents/carers at the earliest opportunity.

Children requiring regular medication or therapies for long-term medical conditions will be made the subject of a Medical Plan that has been agreed with the parents and health authority.

For their own safety and protection, staff should exercise caution in situations where they are alone with pupils. Other than in formal teaching situations; for example during musical instrument tuition, the door to the room in which the 1:1 coaching, counselling or meeting is taking place should be left open. Where this is not practicable because of the need for confidentiality, another member of staff will be asked to maintain a presence nearby and a record will be kept of the circumstances of the meeting. All rooms that are used for the teaching or counselling of pupils will have clear and unobstructed glass panels in the doors.

School staff should also be alert to the possible risks that might arise from social contact with pupils outside of the school. Home visits to pupils or private tuition of pupils should only take place with the knowledge and approval of the Headteacher. Visits/telephone calls by pupils to the homes of staff members should only occur in exceptional circumstances and

with the prior knowledge and approval of the Headteacher. Any unplanned contact of this nature or suspected infatuations or “crushes” will be reported to the Headteacher. Staff supervising off-site activities or school journeys will be provided with a school mobile phone as a point of contact for parents and carers.

Staff will only use the school's digital technology resources and systems for professional purposes or for uses deemed 'reasonable' by the Head and Governing Body. Staff will only use the approved school email, school learning platform or other school approved communication systems with pupils or parents/carers and only communicate with them on appropriate school business and will not disclose their personal telephone numbers and email addresses to pupils or parents/carers. Staff will not use personal cameras (digital or otherwise) or camera phones for taking and transferring images of pupils or staff without permission and will not store images at home.

Staff should be aware of the school's whistle-blowing procedures and share immediately any disclosure or concern that relates to a member of staff with the Headteacher or one of the Designated Safeguarding Leads if the Headteacher is not available and nothing should be said to the colleague involved. It should be shared with the Chair of Governors if it relates to the Headteacher.

### **CONTRACTORS**

Building contractors who are engaged by or on behalf of the school to undertake works on site will be made aware of this policy and the reasons for this. Long-term contractors who work regularly in the school during term time will be asked to provide their consent for DBS checks to be undertaken. These checks will be undertaken when individual risk assessments by the Leadership Team deem this to be appropriate. During major works, when large numbers of workers and sub-contractors may be on site during term time, Health and Safety risk assessments will include the potential for contractors or their employees to have direct access to pupils in non-teaching sessions. All contractors and sub-contractors will be issued with copies of the school's code of conduct for staff.

Individuals and organisations that are contracted by the school to work with or provide services to pupils will be expected to adhere to this policy and their compliance will be monitored. Any such contractors will be subject to the appropriate level of DBS check, if any such check is required (for example because the contractor is carrying out teaching or providing some type of care for or supervision of children regularly). Contractors for whom an appropriate DBS check has not been undertaken will be supervised if they will have contact with children. Under no circumstances we will allow a contractor in respect of whom no checks have been obtained to work unsupervised, or engage in regulated activity. We will determine the appropriate level of supervision depending on the circumstances.

We will always check the identity of contractors and their staff on arrival at the school.

### **COMPLAINTS/ALLEGATIONS MADE AGAINST STAFF**

Rotherhithe Primary School takes seriously all complaints made against members of staff. Procedures are in place for pupils, parents and staff to share any concern that they may have about the actions of any member staff or volunteer. All such complaints will be brought immediately to the attention of the Headteacher or one of the Designated Safeguarding Leads if the Headteacher is not available and nothing should be said to the colleague involved. In cases where the Headteacher is the subject of the allegation or concern, they will be reported to the Chair of Governors, in order that they may activate the appropriate procedures.

These procedures are used in respect of all cases in which it is alleged that a teacher or member of staff (including volunteers) in a school or college that provides education for children under 18 years of age has:

- behaved in a way that has harmed a child, or may have harmed a child;
- possibly committed a criminal offence against or related to a child; or
- behaved towards a child or children in a way that indicates he or she may pose a risk of harm to children; or
- behaved or may have behaved in a way that indicates they may not be suitable to work with children.

The Local Authority's Designated Officer(s) (DO) should be informed of all allegations that come to a school's attention and appear to meet the criteria. Contact can also be made with LA's Schools Safeguarding Coordinator who will liaise with the DO. Many cases may well either not meet the criteria set out above, or may do so without warranting consideration of either a police investigation or enquiries by local authority children's social care services. In these cases, local arrangements will be followed to resolve cases without delay.

Some rare allegations will be so serious they will require immediate intervention by children's social care services and/or police. In such cases, referral to the DO will lead to a Strategy Meeting or Discussion being held in accordance with the DfE guidance and London SCB procedures. This process will agree upon the appropriate course of action and the time-scale for investigations.

The school has a legal duty to refer to the DBS anyone who has harmed, or poses a risk of harm, to a child and who has been removed from working (paid or unpaid) in regulated activity, or would have been removed had they not left. The DBS will consider whether to bar the person. Referrals will be made as soon as possible after the resignation or removal of the individual.

The full procedures about dealing with allegations of abuse made against teachers and other staff can be found in Part Four of the DfE guidance "[Keeping children safe in education](#)".

**The Chair of Governors is: Mary Henley**

**The Vice Chair is Christine McCree**

**The Link governor with responsibility for safeguarding is: Christine McCree**

**Please note both Mary and Christine can be contacted via email on [chair@riverhillfederation.southwark.sch.uk](mailto:chair@riverhillfederation.southwark.sch.uk) and via telephone through Maxine Walters at the school office on: 020 7237 1586**

**The LA's DO is: Eva Simcock 020 7525 0689**

**There is also a duty system and one of the CP Coordinators in Quality Assurance Unit is on duty each day to deal with DO issues when DO is unavailable. Duty telephone number for enquiries/referrals is 020 7525 3297**

**The LA's Strategic Lead Officer for safeguarding in education services is: the Director of Education Nina Dohel 020 7525 3252**

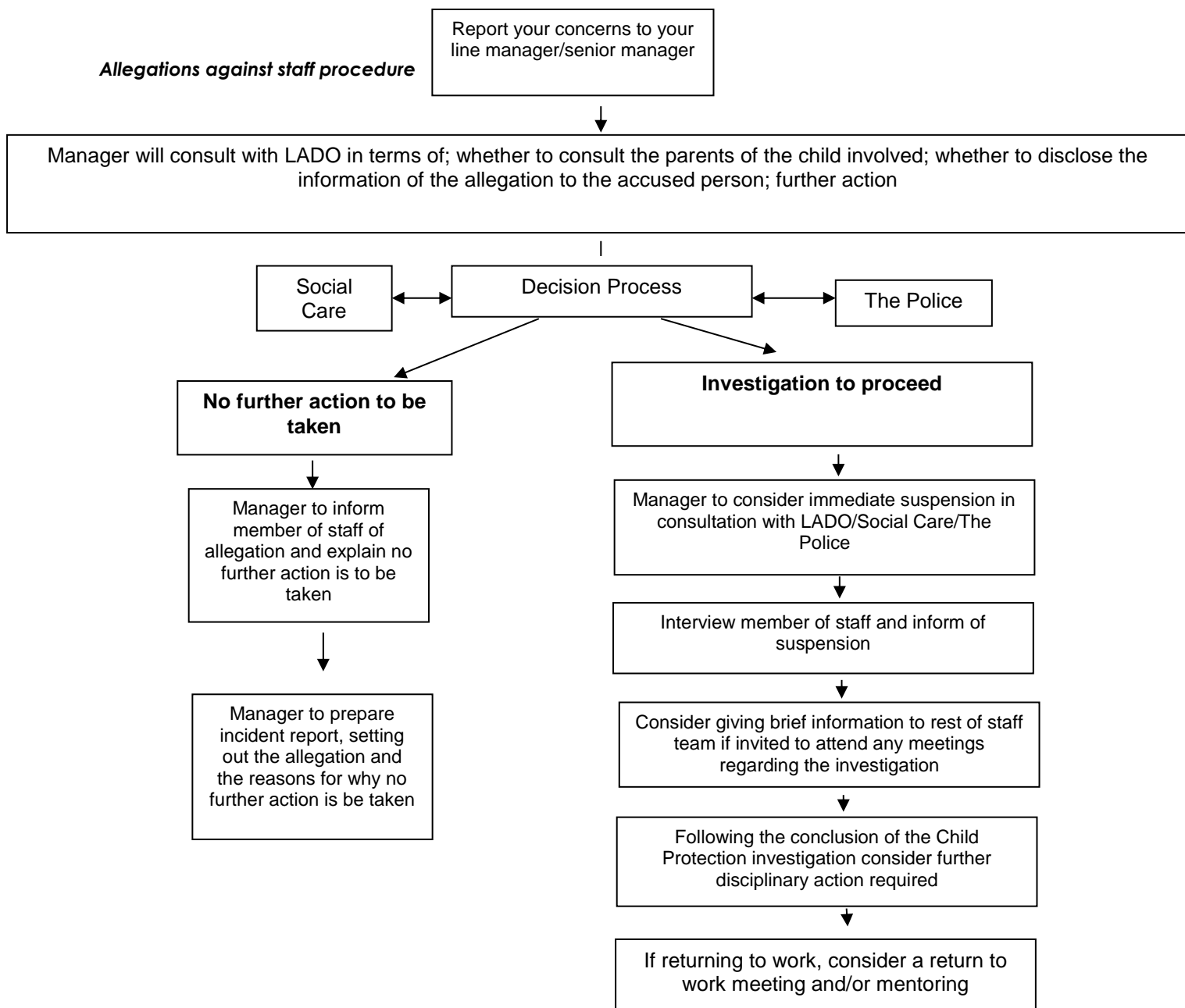
**The LA's Schools Safeguarding Coordinator is: Apo ÇAĞIRICI 020 7525 2715**

**The LA's Family Early Help Service Duty Manager: 020 7525 3893**  
**Family Early Help Service General Educational Enquiries: 020 7525 2714**

We also note the '[Safeguarding information for professionals and the community in Southwark](#)' on Southwark Council's website.

**Allegations against staff procedure**

The following flow chart is the allegations against staff process for all staff, including students, facilitators etc. All staff are made aware of this process.



## **RECORDS**

Brief and accurate written notes will be kept of all incidents and child protection or child in need concerns relating to individual pupils. These notes are significant especially if the incident or the concern does not lead to a referral to other agencies. This information may be shared directly with other agencies as appropriate. All contact with parents and external agencies will be logged and these will be kept as CP records. The school will take into account the views and wishes of the child who is the subject of the concern but staff will be alert to the dangers of colluding with dangerous "secrets".

Child protection records are not open to pupils or parents. All CP records are kept securely by the Designated Safeguarding Lead and separately from educational records. They may only be accessed by the Designated Safeguarding Lead, their Deputies and the senior managers of the school.

The content of Child Protection Conference or Review reports prepared by the school will follow the headings recommended by Children's Services and will, wherever possible, be shared with the parents/carers in advance of the meeting.

Child Protection records will be sent to receiving schools separately from the main pupil file and under a confidential cover when pupils leave the school, ensuring secure transit and a confirmation of receipt will be obtained.

In addition to the child protection file, the DSL will also consider if it would be appropriate to share any information with the new school or college in advance of a child leaving. For example, information that would allow the new school or college to continue supporting victims of abuse and have that support in place for when the child arrives.

When we receive child protection records from other schools, we will ensure key staff such as the DSL and SENCO are aware as required.

If a pupil is withdrawn from the school having not reached the normal date of transfer; due to a family move or any other reason, all efforts will be made to identify any new address and the school to which they are being admitted and to ensure that their educational records are sent without delay to the child's new school. If the parent/carers fails to provide this information, an urgent referral will be made to the Family Early Help Service either through the School's Single Point of Contact (SPOC) or the Family EHS Duty Manager in order that they might make further enquiries. If this school receives educational records concerning a child who is not registered with us, the records will be returned promptly to the sending school with a note, advising them to refer to their LA's Children's Services Department. **A child's name will only be removed from the School's Admissions Register in accordance with the [Pupil Registration Regulations](#) or with the authorisation of a Team Manager in the Family Early Help Service.**

We will inform the Local Authority when we are about to add or delete a pupil's name from the school admission register for any reason in line with Southwark's [Children Missing Education \(CME\) Protocol](#).

When a pupil ceases to be registered at this school and becomes a registered pupil at another school in England or Wales, we will send a Common Transfer File (CTF) to the new school via DfE's secure internet system called school2school.

We will upload CTFs of pupils who have left but their destination or next school is unknown or the child has moved abroad or transferred to a non-maintained school to a searchable area of the school2school website commonly referred to as the 'Lost Pupil Database'. If a pupil arrives in our school and the previous school is unknown, we will search the database for any record of the child.

The school will require documentary proof as to the identity of pupils presented for admission. If there is any doubt as to the identity of a pupil, advice will be sought from the local authority and other statutory agencies, as appropriate. We will maintain accurate and up to date records of those with Parental Responsibility and emergency contacts. We will hold more than one emergency contact number for each pupil or student to make contact with a responsible adult when a child missing education is also identified as a welfare and/or safeguarding concern. Pupils will only be released to the care of those with Parental Responsibility or someone acting with their written consent.

We will take actions according to Southwark's [Protocol for Children who are Uncollected from School](#) when pupils who ordinarily do not make their own way home are not collected by their parents/carers at the end of the school day or from after school clubs and activities and when any children with Special Educational Needs who are transported from school can not be dropped-off at their home or meeting point due to the absence of the parent or carer.

### **SAFETY IN THE SCHOOL**

No internal doors to classrooms will be locked whilst pupils are present in these areas.

Entry to school premises will be controlled by doors that are secured physically or by constant staff supervision or video surveillance. Authorised visitors to the school will be logged into and out of the premises and will be asked to wear their identity badges or be issued with school visitor badges. Unidentified visitors will be challenged by staff or reported to the Headteacher or school office. Carelessness in closing any controlled entrance will be challenged.

The presence of intruders and suspicious strangers seen loitering near the school or approaching pupils, will be reported to the Police by calling 101 or 999, depending on the circumstances and the urgency of the case so that if police stops these individuals they can be spoken to about what they were doing and dealt with accordingly. Brief information about the incident will be sent to LA's Schools Safeguarding Coordinator with a view to alerting other local schools in liaison with the police and through appropriate systems.

Parents, carers or relatives may only take still or video photographic images of pupils in school or on school-organised activities with the prior consent of the school and then only in designated areas. Images taken must be for private use only. Recording and/or photographing other than for private use would require the consent of the other parents whose children may be captured on film. Without this consent the Data Protection legislation would be breached. If parents do not wish their children to be photographed or filmed and express this view in writing, their rights will be respected.



## **Use of mobile phones and cameras**

The following protocols are for all members of staff at Rotherhithe Primary School:

All mobile phones, belonging to visitors' parent/carers and facilitators are to be kept in pockets, bags, purses etc, whilst inside classrooms/ early year's nursery rooms or if children are present. They are not to be used during sessions.

- Staff must keep personal mobile phones locked away in the office or their lockers during working hours.
- Any mobile phone use including phone calls must be taken/made outside of the classroom, nursery entrance, away from children.
- Only school cameras and ipads, not mobile phones are to be used for recording video footage or photographs.
- Parental permission will be sought on entry to school for photographs to be taken of children during school-based activities, such as special performances or events such as International Day. These will be taken using school-based equipment only, unless taken by a professional photographer such as Tony Frootes who is employed by the school.

## **CURRICULUM**

Rotherhithe Primary School acknowledges the important role that the curriculum can play in the prevention of abuse and in the preparation of our pupils for the responsibilities of adult life and citizenship. We will ensure that children are taught about safeguarding, including online safety and will consider this as part of providing a broad and balanced curriculum. It is expected that all curriculum co-ordinators will consider the opportunities that exist in their area of responsibility for promoting the welfare and safety of pupils. As appropriate, the curriculum will be used to build resilience, help pupils to keep safe and to know how to ask for help if their safety is threatened. As part of developing a healthy, safer lifestyle, pupils will be taught, for example:

- to recognise and manage risks in different situations and then decide how to behave responsibly;
- to judge what kinds of physical contact are acceptable and unacceptable;
- to recognise when pressure from others (including people they know) threatens their personal safety and well-being; including knowing when and where to get help;
- to use assertiveness techniques to resist unhelpful pressure;
- emotional literacy.

Where necessary we will work with external agencies to support this work, for example via The Agencies Supporting Southwark Programme ([ASSP](#)), which is the quality assurance gateway for all organisations and individuals wishing to work with Southwark's children and young people.

All computer equipment and internet access within the School will be subject to appropriate "parental controls" and Internet safety rules in line with our Online Safety Policy. We will be careful that "over blocking" does not lead to unreasonable restrictions as to what children can be taught with regard to online teaching and safeguarding.

## **HEALTHY SCHOOLS**

Rotherhithe Primary School will work with partners to promote a whole healthy school approach and achieving the “Healthy School London” status – including a focus on the curriculum with the aim of:

- Developing a school ethos, culture, spiritual, moral, social and cultural (SMSC) development provision and environment which encourages a healthy lifestyle for all pupils, including the vulnerable;
- Using the full capacity and flexibility of the curriculum to help pupils to be safe and healthy;
- Ensuring that food and drink available across the school day reinforce the healthy lifestyle message;
- Covering relevant issues through Relationships Education and Relationships and Sex Education (formerly known as Sex and Relationship Education) and/or where delivered, through Personal, Social, Health and Economic (PSHE) education. We note the Government's regulations which will make the subjects of Relationships Education (for all primary pupils) and Relationships and Sex Education (for all secondary pupils) and Health Education (for all pupils in state-funded schools) mandatory from September 2020.
- Providing high quality Physical Education (PE) and sport to promote physical activity;
- Promoting an understanding of the full range of issues and behaviours which impact upon lifelong health and wellbeing, including emotional wellbeing and mental health;
- Working in partnerships with parents/carers, local communities, external agencies and volunteers to support health and wellbeing of all pupils including the vulnerable.

## **WORKING IN PARTNERSHIP WITH PARENTS**

It is our policy to work in partnership with parents or carers to secure the best outcomes for our children. We will therefore communicate as clearly as possible about the aims of this school.

- We will use clear statements in our brochures and correspondence.
- We will liaise with agencies in the statutory, voluntary and community sectors and locality teams that are active in supporting families.
- We will be alert to the needs of parents/carers who do not have English as their first language and will utilise the translation services as necessary.
- We will distribute the LA's leaflet for parents, “[Protecting Children in Education Settings](#)”.
- We will make available a copy of this policy to any parent who requests it. The policy will also be available through the school's web site.
- We will keep parents informed as and when appropriate.

## **MONITORING AND EVALUATION**

The governing body will monitor the safeguarding arrangements in the school to ensure that these arrangements are having a positive impact on the safety and welfare of children. This will be evaluated on the basis of evidence of:

- the extent to which a positive culture and ethos is created where safeguarding is an important part of everyday life in the school, backed up by training at every level
- the content, application and effectiveness of safeguarding policies and procedures, and safer recruitment and vetting processes

- the quality of safeguarding practice, including evidence that staff are aware of the signs that children may be at risk of harm either within the setting or in the family or wider community outside the setting
- the timeliness of response to any safeguarding concerns that are raised
- the quality of work to support multi-agency plans around the child.

## **COMPLAINTS**

All complaints arising from the operation of this policy will be considered under the school's complaint procedure, with reference to the LA's Strategic Lead Officer for safeguarding in education services, as necessary.

<b>Mary Henley</b>	<b>Chair of Governors</b>	<b>Date</b>
<b>Lisa Christiansen</b>	<b>Head of School</b>	<b>Date</b>
<b>Kofi Danquah</b>	<b>Designated Safeguarding Lead</b>	<b>Date</b>